



City of Bloomfield Hills

Phase II 2010-2012 Road Improvement Program



HUBBELL, ROTH & CLARK, INC
Consulting Engineers

Introductions

- City Commissioners in Attendance
- City Staff
 - Jay Cravens, City Manager
 - Jamie Spivy, DPW Foreman
- Hubbell, Roth and Clark, Inc.
 - Jamie Burton
 - Brad Shepler
 - Dana Calhoun



HUBBELL, ROTH & CLARK, INC
Consulting Engineers

Background

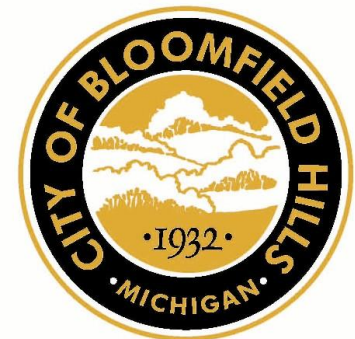
- 2001-2007 no significant road work completed
- Continued Deterioration
 - Age
 - Poor Drainage
 - Trash Haulers and other service vehicles
 - Lawn Irrigation



HUBBELL, ROTH & CLARK, INC
Consulting Engineers

Background

- 2006 – Developed comprehensive Road Improvement Program Plan
 - 10 year - \$10 million program
 - Designated bond financing – 3 series
 - Fit debt payments to current indebtedness
 - Little to no impact on millage
 - Several public meetings



HUBBELL, ROTH & CLARK, INC
Consulting Engineers

2007-2009 Phase I

- Hillwood
- Hammond Ct
- Lakeview
- Charing Cross Ct
- Church
- Edgemere
- Lone Pine Hill
- Bloomfield Hills Parkway
- Barden
- Guilford
- Keswick
- DPW Repairs



HUBBELL, ROTH & CLARK, INC
Consulting Engineers

2007-2009 Phase I

- 17 City roads addressed
- 3.6 miles of road way replacement, repair, or rehabilitation
- 0.3 miles of gravel roads paved (by SAD)
- 5,470 feet of water main replacement
- 36 water service leads replaced to the property line
- \$234,565 (PRV) investment
- \$737,900 total water improvements
- 58 sanitary sewer manholes rehabilitated
- 2 sanitary sewer lines replaced or repaired
- 2,470 feet of new storm sewer
- 6,710 feet of road under drain
- 740 feet of ditching



HUBBELL, ROTH & CLARK, INC
Consulting Engineers

Pavement Condition Survey

Indicator	2006 Numerical Classification	2008 Numerical Classification	Related Description
PQI	5.6	5.5	Good/Fair
RCI	5.3	5.3	Marginal
SDI	6.5	6.3	Severe Distress

RCOC PQI – 6.5

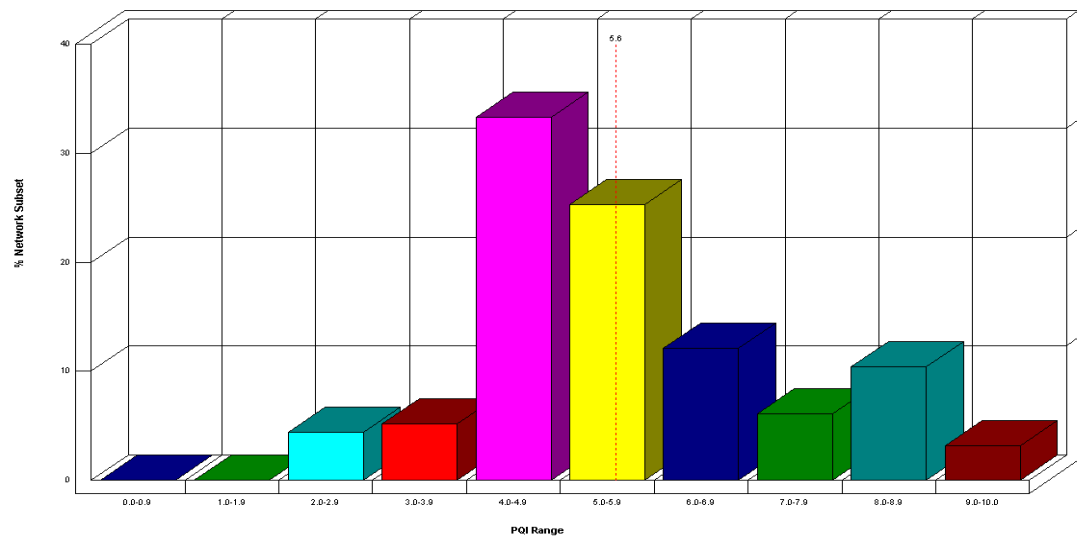
City average is less than RCOC

Did not take into account Phase I roads = City similar to RCOC



HUBBELL, ROTH & CLARK, INC
Consulting Engineers

First year of analysis is 2006



PQI Range:	0.0-0.9	1.0-1.9	2.0-2.9	3.0-3.9	4.0-4.9	5.0-5.9	6.0-6.9	7.0-7.9	8.0-8.9	9.0-10	
Sections:	0	0	10	18	75	64	26	15	25	5	238
%:	0.0	0.0	4.4	5.2	33.3	25.3	12.1	6.1	10.4	3.2	
Ln-mi: x 10	0.0	0.0	0.3	0.3	2.0	1.5	0.7	0.4	0.6	0.2	6.0

Road Commission for Oakland County

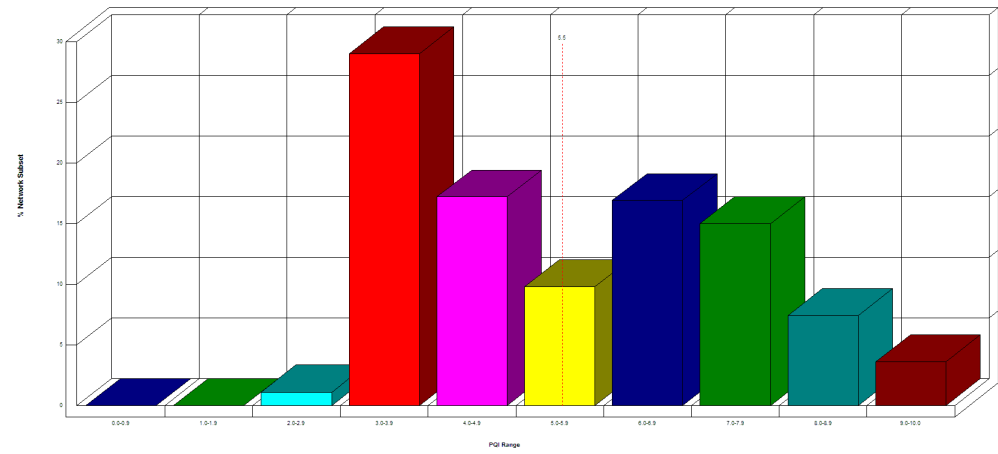


HUBBELL, ROTH & CLARK, INC
Consulting Engineers

11/23/2008

PERFORMANCE INDICATORS
2008 - Bloomfield Hills : Aged PQI by Lane-Miles

First year of analysis is 2008



PQI Range:	0.0-0.9	1.0-1.9	2.0-2.9	3.0-3.9	4.0-4.9	5.0-5.9	6.0-6.9	7.0-7.9	8.0-8.9	9.0-10	
Sections:	0	0	3	56	28	18	27	30	16	4	182
%:	0.0	0.0	1.1	29.0	17.2	9.8	16.9	15.0	7.4	3.6	
Ln-mi: x 10	0.0	0.0	0.1	1.4	0.8	0.5	0.8	0.7	0.4	0.2	4.9



Phase II General Thoughts

- Communication Plan
- Easements
- Bridges and Culverts are most critical need
- \$4,000,000 bond sale
- Water, sewer, and SAD's treated the same



HUBBELL, ROTH & CLARK, INC
Consulting Engineers

Maps

- **Exhibit A – Existing Conditions**
- **Exhibit B – Related Infrastructure Needs**



HUBBELL, ROTH & CLARK, INC
Consulting Engineers

2010 Road Program

- **Roads - Lone Pine (E), Lone Pine (W), Cranbrook Court, Linda Lane, Knoll, Court, and Cranbrook Road (N)**
- **Bridges and Culverts - Lone Pine Bridge (near Cranbrook), Cranbrook Road North Bridge, Brady Lane Bridge, Lone Pine Road Culvert, and Cranbrook Court Culvert**
- **Utilities - Water Main Replacement on Linda Lane, Knoll, Court, Lone Pine East and West, and Misc. Sanitary Sewer Rehabilitation**
- **Recommended SAD – Brady Lane**



HUBBELL, ROTH & CLARK, INC
Consulting Engineers

2011 Road Program

- **Roads - Orchard Ridge Road North, Epping Lane, and Conge Drive**
- **Bridges and Culverts - Orchard Ridge North Culvert**
- **Utilities - Water Main Replacement on Epping Lane, Conge Drive, PRV Rehabilitation at Orchard Ridge and Ridgewood, and Misc. Sanitary Sewer Rehabilitation**
- **Recommended SAD – Ridgewood, Country Club, Pembroke**



HUBBELL, ROTH & CLARK, INC
Consulting Engineers

2012 Road Program

- **Roads - Chestnut Drive, Circle, Court, Woodwind Drive, Renton Court, and Manorwood Drive**
- Bridges and Culverts - Hickory Grove Culvert
- Utilities - Misc. Water System and Misc. Sanitary Sewer Improvements



HUBBELL, ROTH & CLARK, INC
Consulting Engineers

Maps

- **Exhibit C – Phase II Program**



Phase II Estimated Costs

■ Road Improvement Fund	\$3,849,000
■ Culverts and Bridges	\$ 980,000
■ <u>SAD</u>	<u>\$ 250,000</u>
Sub-Total Road Improvement BONDS	\$5,079,000
■ Water Fund	\$1,100,000
■ <u>Sanitary Sewer Fund</u>	<u>\$ 240,000</u>
TOTAL ESTIMATED PROJECT COSTS -	\$6,419,000



HUBBELL, ROTH & CLARK, INC
Consulting Engineers

Phase II Estimated Costs

- Road Improvement Bonds \$4,000,000
- Sub-Total Road Improvement BONDS \$5,079,000

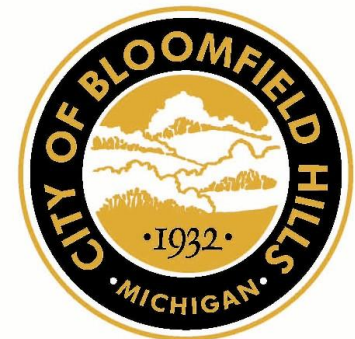
- Unknown costs: bridges, culverts, SAD, etc.
- Recommended Deferred Roads: 1) SAD Contributions; 2) Renton Court and Manorwood; 3) Linda Lane, Knoll and Court; 4) Cranbrook Road North and; 5) Conge Drive



HUBBELL, ROTH & CLARK, INC
Consulting Engineers

Schedule

- August 2009 – Public Information open house where the updated report is presented;
- Fall each year – Design started for upcoming road project
- Winter each year – Second open house for resident input
- Spring each year – Project bid
- Summer each year - Construction



HUBBELL, ROTH & CLARK, INC
Consulting Engineers

City Commission Consideration

■ City Commission Meetings

- July 2009- Commissioners provided input on the ranking and plan
- 2010-2012 Road Improvement Program tentatively determined
- August/September 2009- Commissioners will confirm financing and updated overall Plan
- Authorize start of road program



HUBBELL, ROTH & CLARK, INC
Consulting Engineers

Road Improvement Program Contacts

- City website www.bloomfieldhillsmi.net
- City Hall 248.644.1520
 - City Manager Jay Cravens
- Hubbell, Roth and Clark, Inc.
 - James Burton, P.E. Project Manager
 - 248.454.6363
 - jburton@hrc-engr.com
 - Brad Shepler, P.E. Project Engineer
 - 248.454.6356
 - bshepler@hrc-engr.com



HUBBELL, ROTH & CLARK, INC
Consulting Engineers